



Welcome to the round table on Gender Equality in Cities

7 March 2019

@EUinmyRegion | @Urbact | #GenderEqualCities | #ESIFunds

Opening speeches

- ❖ Commissioner for Regional Policy Corina Crețu
- ❖ Executive Director of UN-Habitat Maimunah Mohd Sharif
- ❖ Mayor Ibon Uribe (Galdakao)

@EUinmyRegion | @Urbact | #GenderEqualCities | #ESIFunds



GENDER EQUAL CITIES



Marie-Louise Rönnmark,
Mayor of Umeå



URBACT

Driving change for
better cities



EUROPEAN UNION
European Regional
Development Fund



Why URBACT activity on gender equality now?





New Urban Agendas

Sustainable Development Goal no 5

Urban Agenda for the European
Union: Cross Cutting Theme





Inequality is persistent



The 2030 Agenda for Sustainable Development aims to achieve **gender equality and empower all women and girls.**



Only **34.4%** of the EU self-employed and **30%** of start-up entrepreneurs



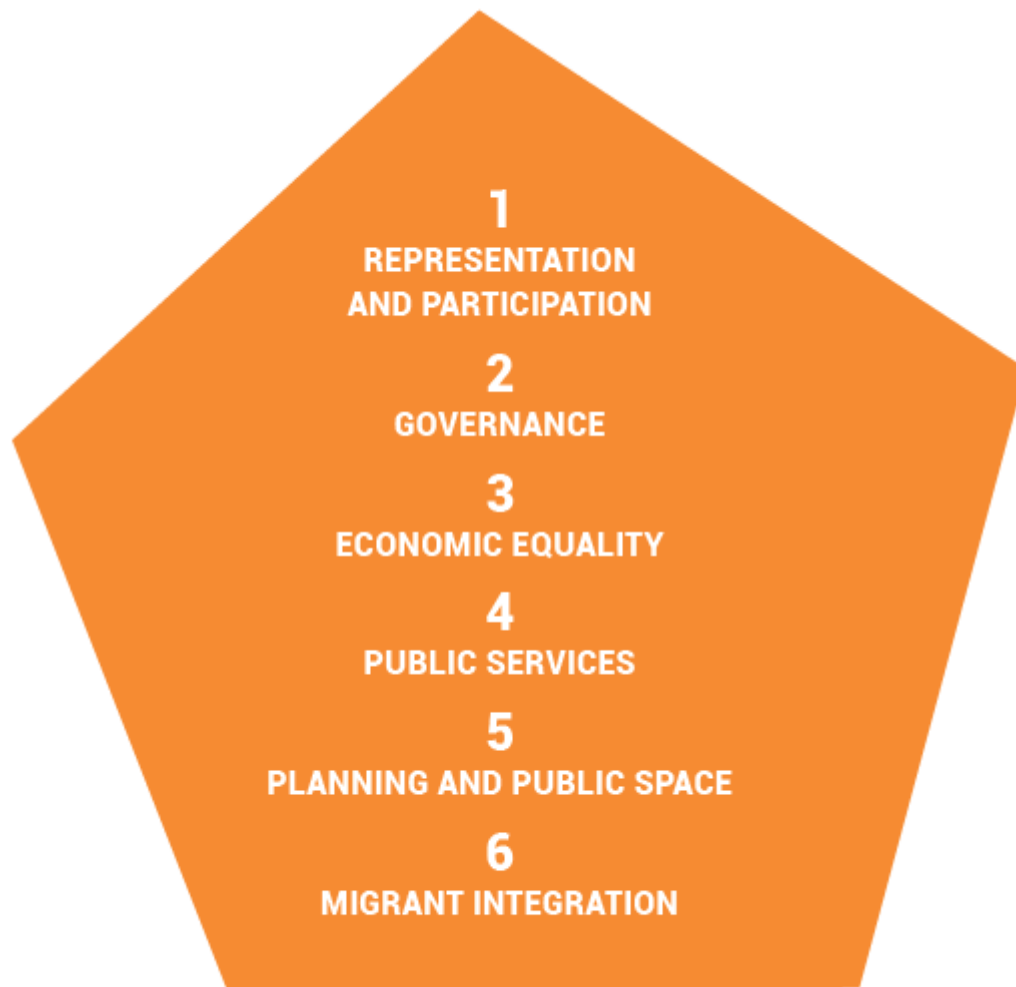
Men are more likely to make a **single destination journey by car**, whereas women generally use **public transportation to do multiple journeys in one day**, because they combine employment and care duties.





Local government can make a difference







Knowledge and examples

- ◆ URBACT Good Practices
- ◆ Tips for cities to reduce gender based inequality
- ◆ In cooperation with Council of European Municipalities and Regions (CEMR): Charter on Equality of Women and Men in Local Life



Umeå



“Umeå has for a long time had a goal working with gender equality from the city council, and the goal is to create conditions for men and women to have equal power to shape society as well as their own lives.”

Linda Gustafsson
Gender Equality Officer, Umeå, Sweden



Umeå



**Data
underpinning
policy**



- Gender equality benefits everyone
- Intersectionality: Recognising and addressing multiple and overlapping forms of inequality
- Collaboration with NGOs and researchers
- Integrating hard and soft measures



HeForShe
UN Women Solidarity Movement
for Gender Equality





10 ACTIONS TO KICK START GENDER EQUAL CITIES



Key Findings from the Regional Gender Equality Monitor

Hedvig Norlén, DG JRC

Eleni Papadimitriou, DG JRC

Lewis Dijkstra, DG REGIO

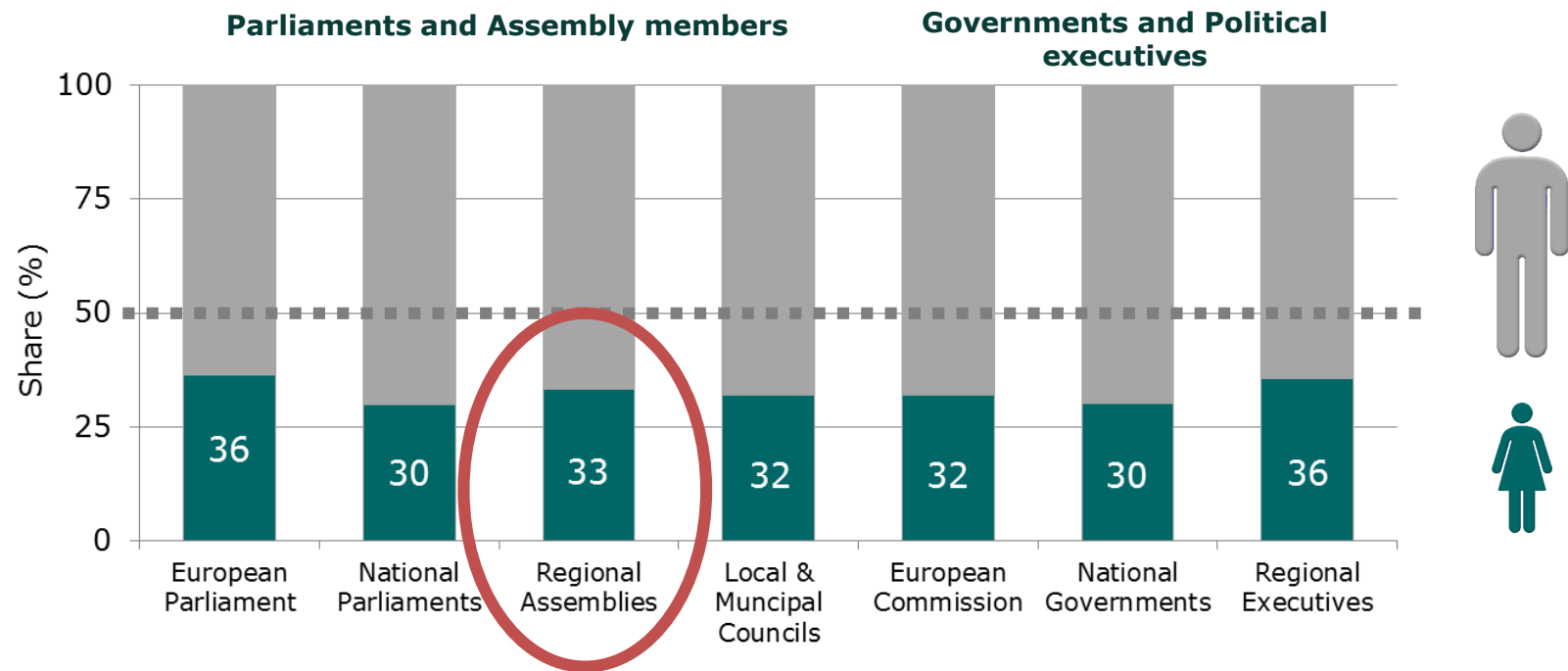
Gender Equality in Cities, 07/03/19

52%

eligible voters in the EU are women

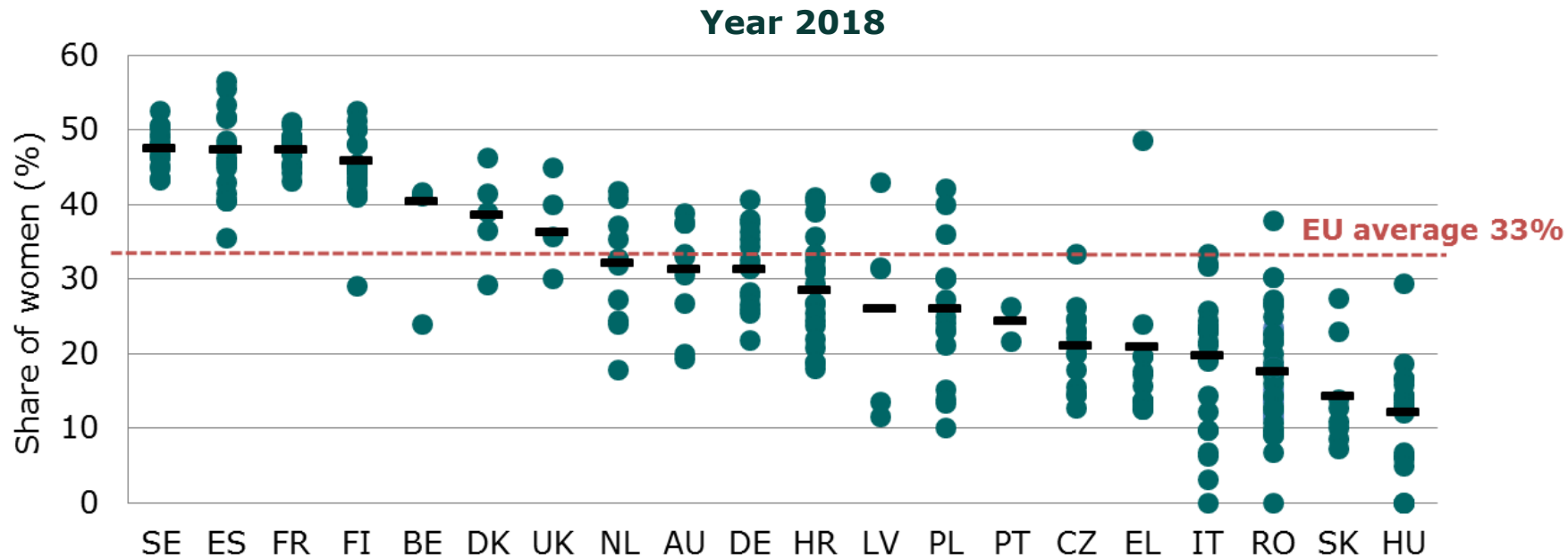
however...

...unequal distribution of Power



Source: JRC calculations based on data from the Gender Statistics Database, European Institute of Gender Equality, Q4 2018.

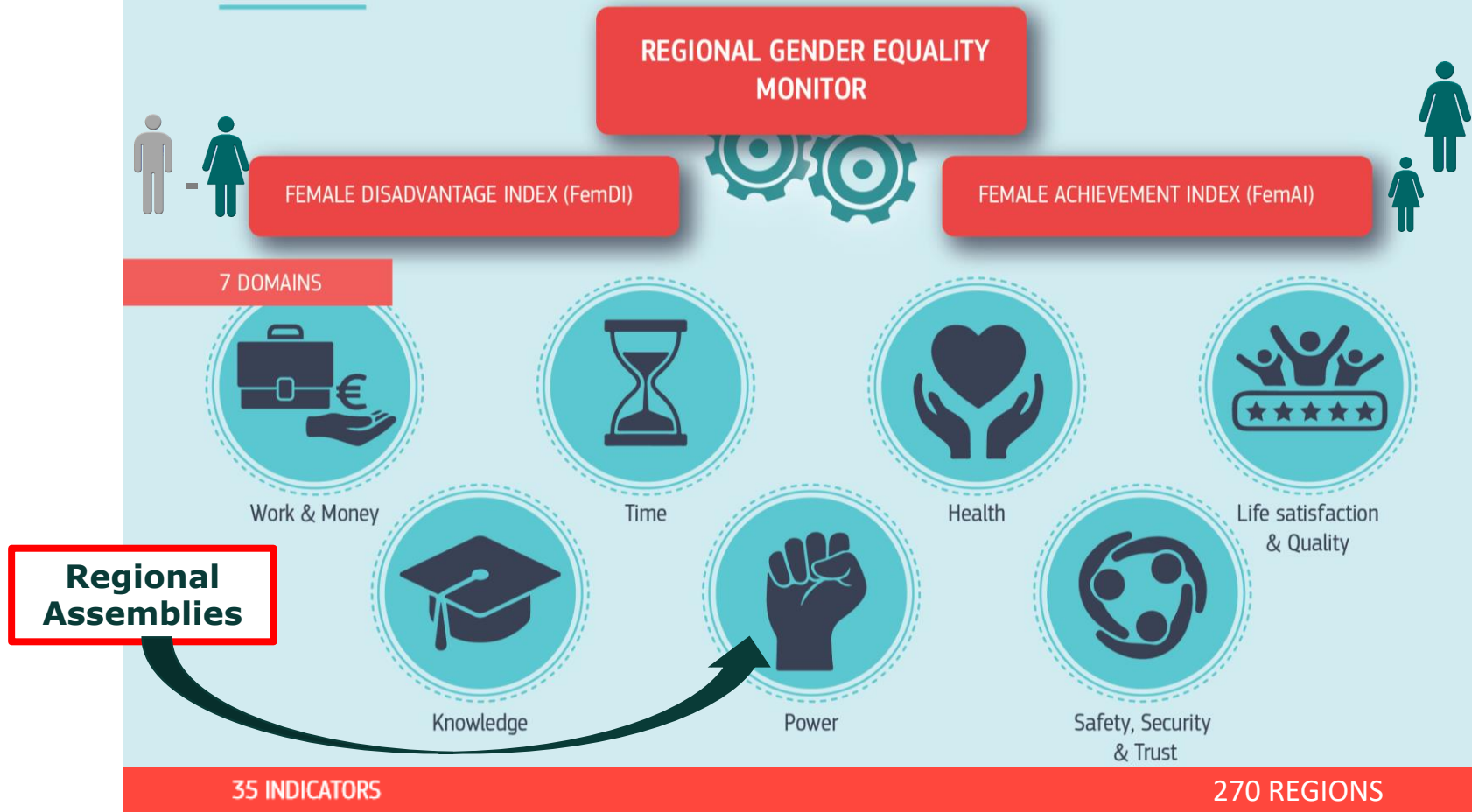
Regional Assemblies - national averages hide difference between regions



Note: 8 Member States do not have Regional Assemblies (BG, CY, EE, ES, HU, SI, SK, PL)

Regional monitoring is essential

CONCEPTUAL FRAMEWORK

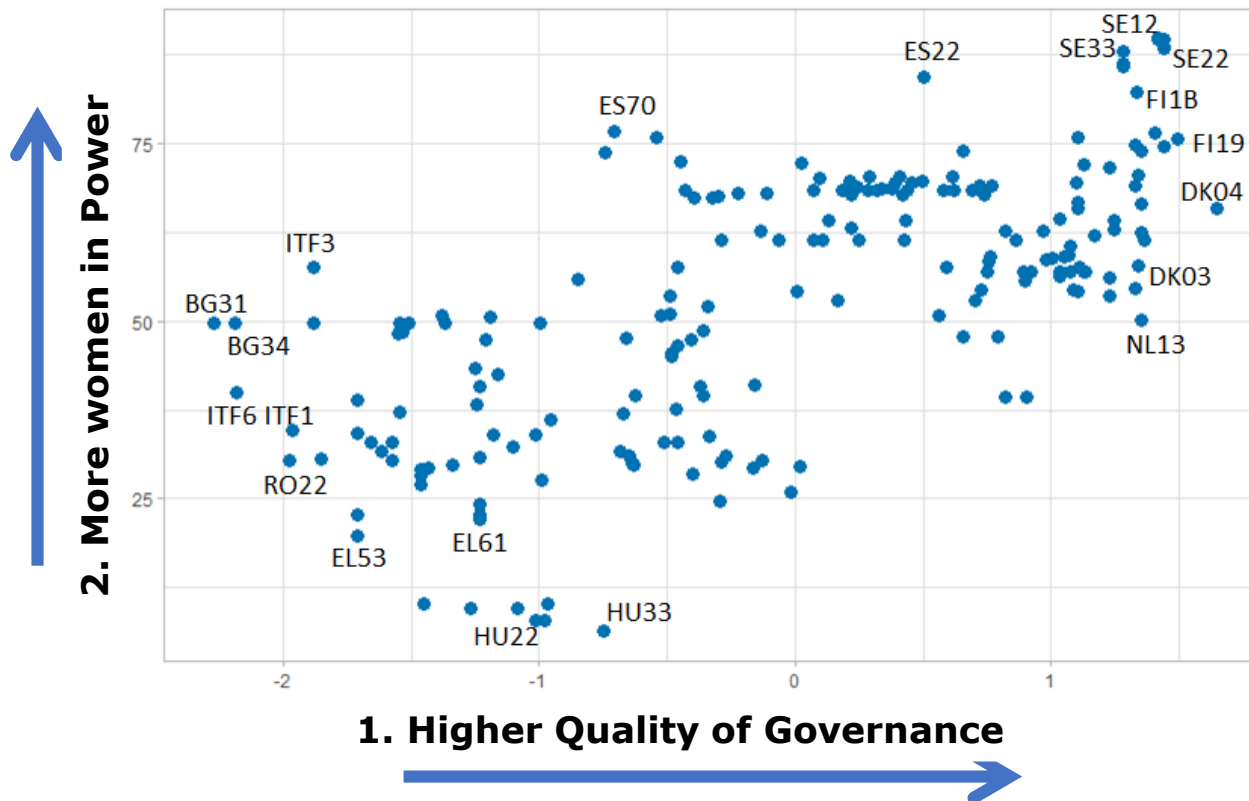


Source: JRC report "The Regional Gender Equality Monitor", EUR 29679 EN

2

Key Findings

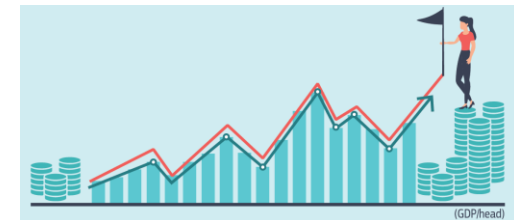
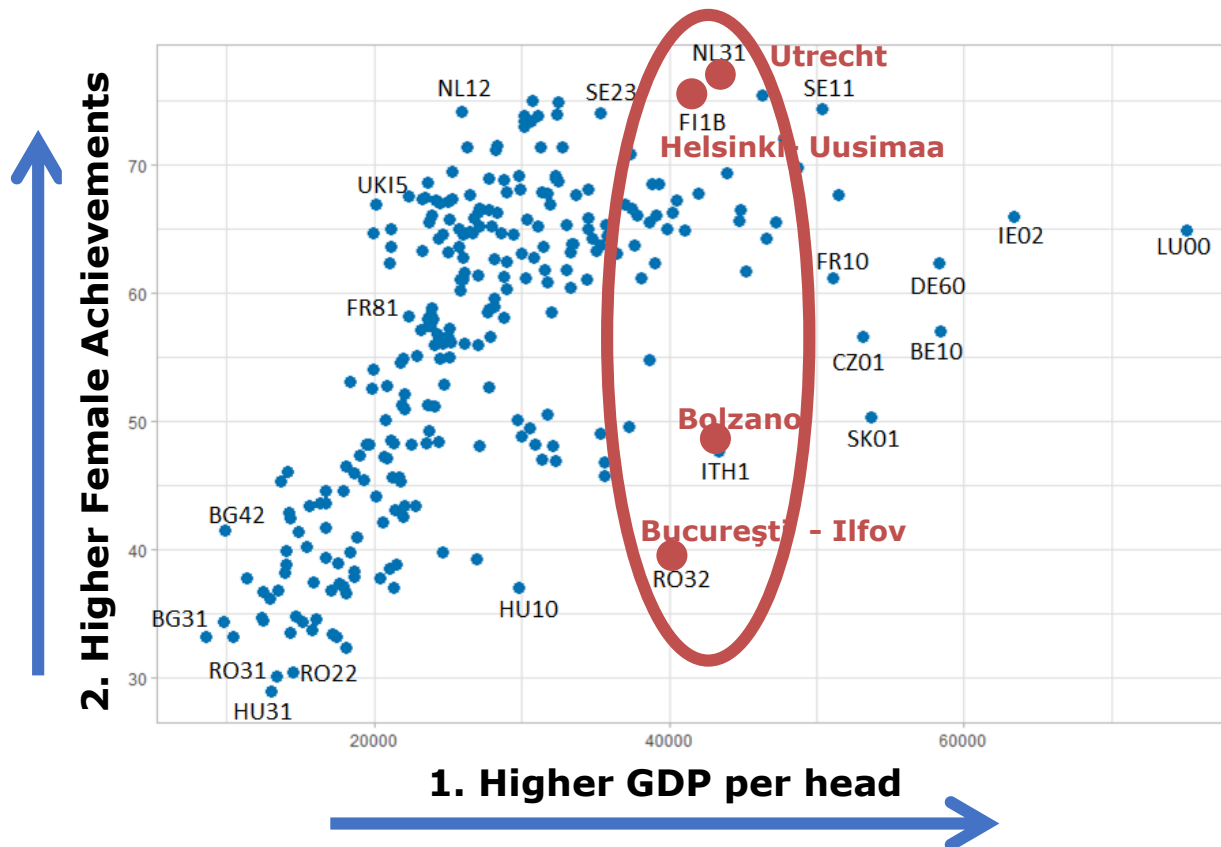
1. More women in Power and higher Quality of Governance



1. European Quality of Government Index, 2017

2. Power dimension in the Female Achievement Index, 2018

2. Higher Female Achievements are linked to higher levels of GDP per head



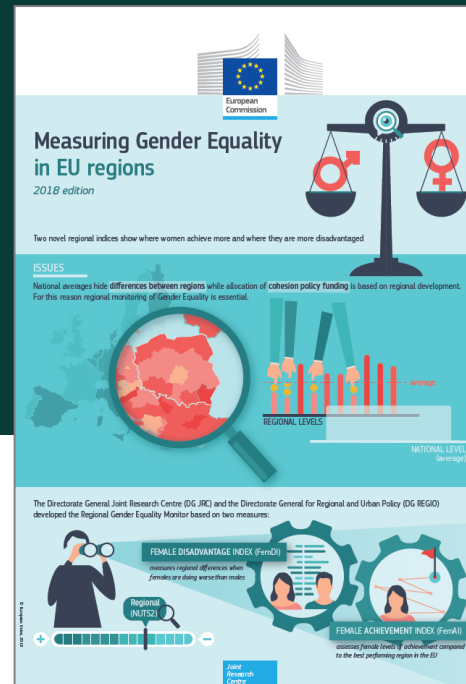
1. GDP (PPS per head) in regions, 2016

2. Female Achievement Index, 2018

THANK YOU

Welcome to email us at:
hedvig.norlen@ec.europa.eu

European Commission, Competence Centre on Composite
Indicators and Scoreboards
<https://composite-indicators.jrc.ec.europa.eu/>



EUR 29679 EN

URBAN RESILIENCE PROGRAMME

GENDER EQUALITY ENHANCER



UN HABITAT
FOR A BETTER URBAN FUTURE

KEY GENDER EQUALITY CHALLENGES ADDRESSED

Unsecure tenure
over land and
housing

Gender-based
discrimination in
public spaces

Unequal Access to
Jobs and
livelihoods
opportunities

Unequal Access to
basic urban
services

Unequal
representation in
political
institutions

Gender pay gaps
in salaries and
pensions

Barriers in political
participation

Violence against
women and girls

Disadvantages in
Access to
Education

METHODOLOGICAL APPROACH

- Make sure that all the data and information collected and compiled through the CRPT indicators are disaggregated by gender (*i.e. population with access to electricity or % of population living below the poverty line*).
- Leverage a limited array of gender-informed indicators as a complementary tool to support the resilience diagnosis of the city from a gender perspective (*i.e. gender pay gap or coverage of maternity/paternity leave*).

MAIN OUTPUTS AND APPLICABILITY

- Map out patterns of gender inequality, assessing how detected drivers of vulnerability affect differently men and women in the city.
- Take stock of information gaps and barriers, in order to inform, and mainstream from a gender perspective, future data agendas at local, regional and/or national level.
- Support local, regional and/or national authorities in the definition of evidence-based policy solutions for more inclusive urban environments, while contributing to the the localisation of SDGs – particularly SDG5 – in cities.

FIND OUT MORE ON City Resilience or Gender Equality Enhancer:

Esteban Leon

esteban.leon@un.org

www.unhabitat.org/urbanresilience



/uresiliencehub

#UrbanResilience

Angela Mwai

angela.mwai@un.org

www.unhabitat.org/urban-themes/gender/

UN HABITAT
FOR A BETTER URBAN FUTURE



Round table discussion

1. Representation and participation
2. Planning and public space
3. Migrant integration

@EUinmyRegion | @Urbact | #GenderEqualCities | #ESIFunds

1. Representation and participation



2. Planning and public space



3. Migrant integration



10 ACTIONS TO KICK START GENDER EQUAL CITIES



Thank you for your participation!

@EUinmyRegion | @Urbact | #GenderEqualCities | #ESIFunds